



Lenovo IdeaPad 110-15ISK Hard Drive Replacement

Fix the hard drive.

Written By: Stuart Luhigo





TOOLS:

- [iFixit essential toolkit](#) (1)
-

Step 1 — Back Keyboard Screws



- Remove the two keyboard screws on the back of the device (the two on the same row)

Step 2 — Remove the Keyboard



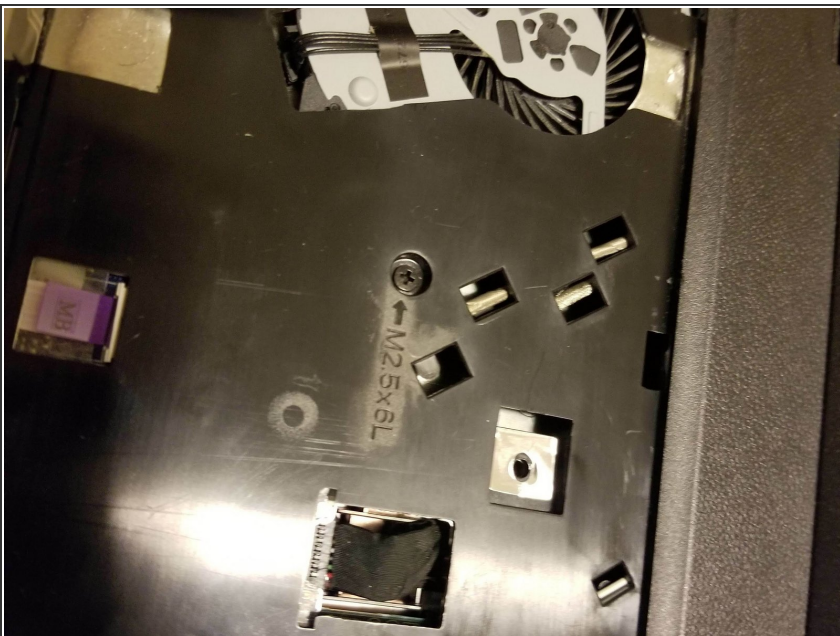
- Insert a prying tool in the crack between the keyboard and frame. Start by the power button and go all the way round the keyboard.

Step 3 — Keyboard Ribbon Cable



- Remove the ribbon cable and remove the keyboard afterward.

Step 4 — Under Keyboard



- After the keyboard is removed, remove the screw and the battery connector.

Step 5 — Disk Drive



- Remove the screw that is under the two keyboard screws and pull the disk drive out.

Step 6 — Outer Screws



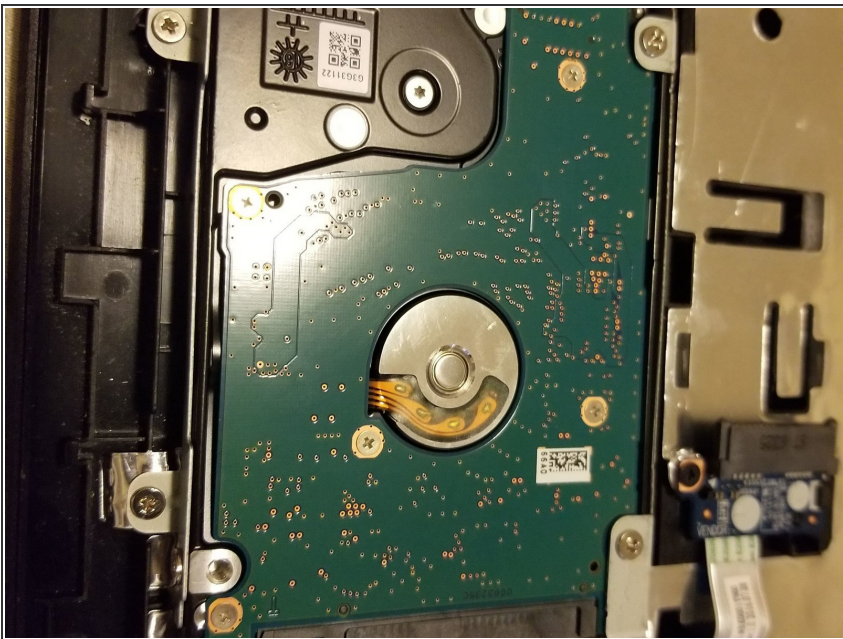
- Remove all of the screws on the outside edge of the bottom.

Step 7 — Separating the Case



- Flip the laptop over and in the crack between the two case pieces slide a prying tool in between and follow the perimeter until the two pieces are separated.

Step 8 — Drive Bay



- Remove the four screws securing the drive bay into the case.

Step 9 — Removing the Drive



- Remove the four screws the hold the metal cage onto the drive to separate them.

To reassemble your device, follow these instructions in reverse order.